

Winter

NEWSLETTER

January 2018

www.CentralOH.ASHE.pro

Presidents Message

In May, the Central Ohio Section of ASHE chose me as President. It is hard to believe that my term as president is more than halfway over. I have served on the board for 4 years now and this has been an exciting step for me to lead the section. I am honored to follow in the footsteps of so many inspiring ASHE leaders that have advanced the section to where it is today. We have a very strong board and I am fortunate to not only have one past president, but three past presidents on our current board.

I am originally from Tiffin, Ohio... yes Tiffany from Tiffin. My career in engineering began at the University of Toledo where I graduated with a Bachelor's degree in Civil Engineering in 2006. After obtaining my degree, I accepted a position with an engineering consulting firm and moved to Columbus. It's hard to believe that was 12 years ago and the journeys I have made along the way. I have been married for almost 10 years to my husband Scott, and we have two boys, Evan (7) and Rowan (5).

My term as president started out this summer by meeting with twelve of our past presidents. At the meeting, I received some valuable input from our past leaders and I expressed what my goals were as the current president and what I hoped to accomplish during my term. Thanks to past leadership, we have been able to establish a solid foundation of what makes our local chapter successful. Over the past few years we have been looking at ways to improve our existing programs as well as add new benefits and programs to the membership. My goal as president was to maintain our current structure of events and strengthen it. Now that I have transitioned to the public sector, I wanted to get more chapter involvement from the public sector. A suggestion that was given at the past presidents meeting was to provide more benefits to our chapter, such as more technical sessions in which attendees can earn CPU's. This past fall, we were able to partner with the City of Columbus and provide a technical session on the City of Columbus's Traffic Signal Manual. In addition to this technical seminar, I look forward to providing another technical session opportunity before my term is over. Another goal of mine, that has been an on-going goal of the past presidents, is to strengthen ASHE's relationship with The Ohio State University. This began when a scholarship fund was started a few years ago. I would like to further engage the students and make a connection between the University/faculty and our industry. As a further step in this direction, the chapter exploring the idea of adding a board position to act as the liaison between the chapter and The Ohio State University and oversee the now yearly scholarship fundraising event. This would benefit both the students and ASHE by identifying students with an interest in the transportation industry and providing them growth and mentorship opportunities.

I'm proud of the work our board has carried out thus far this year. At the end of 2017, we held our 2nd Annual ASHE Scholarship Dinner at Scioto Audubon. The organizing committee did a fantastic job, so many personal hours were dedicated to making this a success. We are proud to announce that both corporate and private donations from last year's Scholarship dinner afforded us the funding to increase our scholarships from two to three scholarships in 2017 and we have committed to providing a third scholarship to the Ohio State University for 2018 as well. Thanks to everyone who participated in the event!

I want to thank everyone who volunteered their time or money to our section last year. Our board is comprised of an amazing team and I want to thank them for volunteering their time to serve on the board. I cannot stress how thankful I am for our Board Members and the time and dedication that they put towards our organization. With their dedication, we continue to provide our membership with quality programs and events. Thank you for providing me the opportunity to lead this organization, I will do my best to continue to strengthen our section and ensure that ASHE continues to provide valuable benefits to its membership. I look forward to seeing everyone at our upcoming events and look forward to hearing any input you may have about what you would like to see ASHE achieve this year. Please reach out to one of our board members if you are interested in getting more involved with the chapter. Additionally, as we approach National Engineers Week, I encourage all of our members to reach out to younger engineers, who are just entering the engineering field and have them accompany you to one of our upcoming events.

2016-2017 Board of Directors

President

Tiffany Elchert
City of Columbus

First Vice-President

Emily Steva
ms consultants

Second Vice-President

Sean Oatman
OHM Advisors

Secretary

Mike Taricska
Burgess & Niple

Treasurer

Mike Raubenolt
American Structurepoint

Past President

Josh Epperson
Parsons

Directors

Programs
Justin Soltesz
American Structurepoint

Public Relations

Mike Killian
Burgess & Niple

Technical
Jordan Gort
Strand Associates

Membership/Legislative Liaison

Tom Less
Woolpert

Regional Representative

Aaron Call
OHM Advisors



Mission Statement

Provide a forum for members and partners of the highway industry to promote a safe, efficient and sustainable highway system through education, innovation and fellowship.

Central Ohio ASHE Member Spotlight Questions: Ted Beidler

1.) ***What is your current job?*** I'm the Projects Engineer for the Franklin County Engineer's Office. In that capacity, I primarily plan and program the County's future projects and search for outside funding to get them built. I've been in this position for just under 17 years.

2.) ***How long have you been a member of ASHE? What's your best experience thus far?*** I probably joined ASHE in the early 1990's after starting work with the County. A short time later I was "asked" by my then boss Mark Sherman if I would be "interested" in joining the Board; I wisely said "Yes!" It was very good decision as I served on the Central Ohio Board from 1997 thru my term as the 2002/2003 President. While I've stayed active in ASHE over the years, the time on the Board was probably the best. It was a lot of work at times, but it was gratifying to help contribute to a worthy organization.

3.) ***Tell us about your morning ritual.*** Up and out the door by 6 a.m. to the downtown YMCA on Mondays, Wednesdays and Fridays. The other days, out for a bike ride in the U.A./Grandview area.

4.) ***What was your childhood dream job?*** I grew up in an older established area, but immediately adjacent to our neighborhood there was new road and building construction going on. I spent a lot of time watching the construction, so my guess back then for a "dream job" would have been as a heavy equipment operator. I obviously stayed interested in the construction industry, but ended up on the office / design side of things.

5.) ***What's your favorite moment of your career so far?*** It's not a single event or moment, but more of a collective sense of accomplishment when I look back over all the projects that I have been involved with over the years. It's nice to be able to drive through an area and remember how it was a congested, accident-prone location that is now providing a safer and more efficient route for motorists, pedestrians and bicyclists. The sobering part of passing through the earlier projects though is realizing they were done so many years ago that they are starting to show their age and already

coming due for improvement.

6.) ***What was your first real job?*** I did the usual, part-time jobs delivering newspapers, caddying and working in restaurants all the way through college. Having joined Naval ROTC during my time at Ohio State, my first full-time / real job after graduation was dictated by the Navy. I spent three years as a helicopter pilot on ships that deployed to the Mediterranean and southern Atlantic areas. I finished my obligation to the Navy teaching navigation to NROTC students at the University of Kansas before deciding on a leaving the Navy to pursue a career in engineering.

7.) ***Guilty pleasure: What can you not live without?*** Beer; lots of beer.

8.) ***If Hollywood made a movie of your life; who would you like to see play the lead role as you?*** Paul Newman. Not because he looks or acts anything like me, but I met him once and he was just a truly genuine, friendly individual. Besides being an ex-Navy guy, he was also born and raised in Ohio and graduated from Kenyon College. No matter his acting ability though, any movie on my life would likely send it "straight to DVD".

9.) ***If you could provide one piece of professional advice, what would it be?*** Probably not just "professional" advice, but all-around "life" advice: Treat everyone you meet with the same respect that you would want from others. If not for the basic reason of being a decent fellow human being, you also never know when someone you meet will end up in a key position professionally at some future time; or your boss!



ASHE HAPPY HOUR EVENT

Seventh Son Brewing Co.

On Wednesday, September 20th, Central Ohio ASHE hosted a membership drive happy hour at Seventh Son Brewing Co. New and old ASHE members enjoyed a night out at one of Columbus' most popular craft breweries. Members enjoyed fresh beers and food from local food trucks while networking and catching up with colleagues and friends. ASHE prides itself on providing members with fun networking opportunities like this throughout the year. Stay tuned for the next upcoming ASHE happy hour!



MEMBERSHIP INFORMATION

To receive ASHE updates via email, or inquire about new membership please go to our website, www.CentralOH.ASHE.pro, or contact Tom Less:

tom.less@woolpert.com

* Email addresses will not be released but are available to members.

ASHE CONSTRUCTION TOUR

Newark, Ohio

On October 19th, ASHE organized their first construction tour of a local project. 35 individuals made the drive to Newark, Ohio to tour the first construction mini roundabouts in Ohio. This project started out as a sanitary sewer separation project. Since much of the construction would impact the current roadway infrastructure, the city and the Newark Development Partners saw this as an opportunity to improve the existing conditions. The current configuration was one way traffic around the square with 6 signalized intersections. The roadway width was up to 90 ft wide with up to 4 lanes of traffic. In addition to the utility upgrades, a road diet was implemented with new full depth pavement replacement, new sidewalk with streetscape elements, including bioswales and a conversion of the traffic patterns around the square to 2 way. This new configuration improved accessibility for all transit, including pedestrians. The tour was led by The City of Newark, OHM, ARCADIS, and Igel after a short presentation about the project was completed, the group took a tour of downtown followed by a happy hour at Barrel and Board on the square. Thanks for everyone that presented and for everyone that made the trip to Newark, we appreciate your attendance. Keep on a lookout for our next construction tour!



OTEC LUNCHEON & HAPPY HOUR

October 2017

Sixty ASHE members from throughout the state of Ohio came together for the annual ASHE luncheon at OTEC on Tuesday, October 10, 2017 at the Crowne Plaza in Downtown Columbus. Joining us was ASHE National President, Greg Dutton, PE, who gave a presentation on the current state of ASHE nationwide and future plans. Additionally, two of the three Central Ohio ASHE scholarship winners were in attendance and recognized. Finally, the Project of the Year winners for the ASHE Great Lakes Region were announced. Winners included the Taylor Creek Culvert Extension in the under \$5 million category and the Kentucky Lake Bridge in the over \$5 million category.

Later that evening, the ASHE Central Ohio section joined with local sections of the American Society of Civil Engineers (ASCE), the Association for Bridge Construction and Design (ABCD) and the Engineers Club of Columbus (ECC) to host a joint association happy hour. The estimated attendance was around 225 engineers from the various organizations which allowed people to mingle and gave exposure to our organization.



2nd Annual Scholarship Dinner

ASHE's 2nd annual Scholarship Dinner took place on November 16, 2017 at the Grange Insurance Audubon Center in Columbus. Proceeds from this dinner went directly toward our fund to provide scholarships to Ohio State students interested in the Highway Industry. This year, we had 60 guests attend the dinner, 16 corporate sponsors for the event, and two guest speakers for the evening. Cornell Robertson, Franklin County Engineer, gave an update on what projects Franklin County is currently working on. Allison MacKay, Chair of Civil, Environmental, and

Geodetic Engineering at Ohio State, spoke about her vision for the college of Civil Engineering at Ohio State. Four fabulous raffles were awarded to attendees to conclude the evening.

The three 2017 Scholarship Winners include:

Ruben Morgan, 4th Year

Allyson Fomich, 4th Year

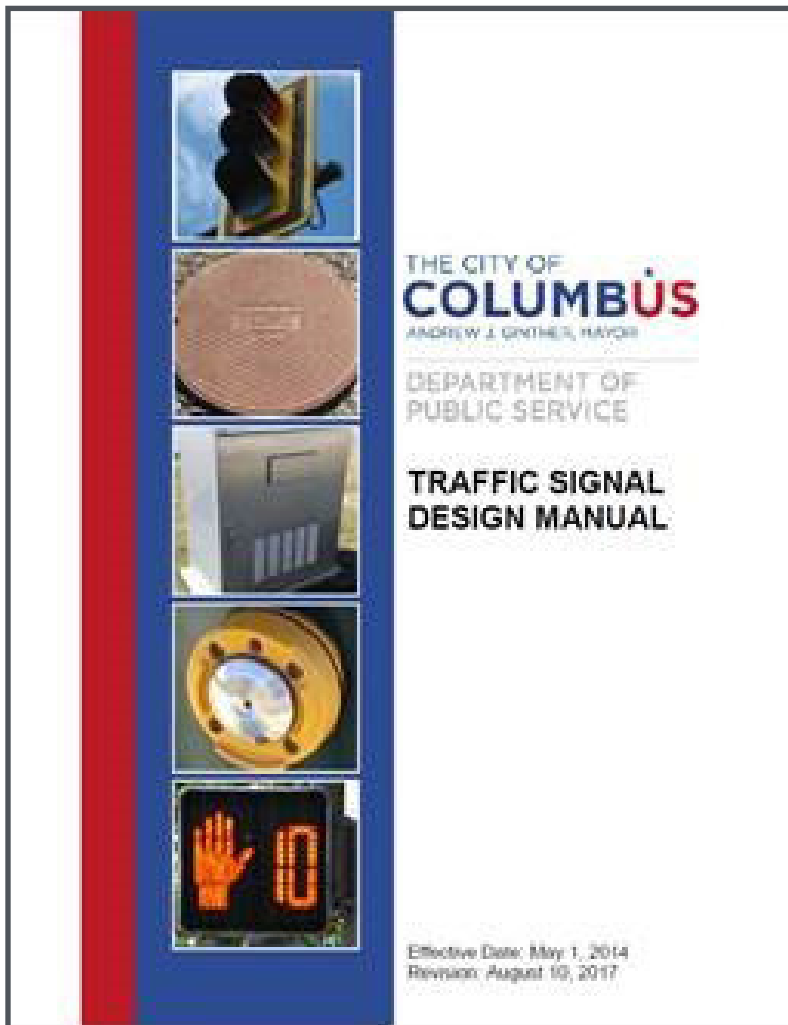
Nicholas Valin, 3rd Year

Due to the success of our dinner, we will again be able to award three scholarships to students in 2018!



City of Columbus

Traffic Signal Design Manual Update



On November 29, 2017, ASHE partnered with the City of Columbus to provide a forum on the updated Traffic Signal Design Manual. Jared Fowler and Andrew Krummel, both City of Columbus traffic signal reviewers, provided an overview of the most recent updates to the manual, construction drawing updates, top 10 common mistakes found on plans and even some pop quizzes. ASHE provided coffee, pastries and bagels to the 80 forum attendees. Each attendee was provided with a certificate for two CPDs.

2017 PROJECT of the YEAR Award



The **ASHE Central Ohio Section** will recognize the outstanding work of its members through this year's Project of the Year Award. All ASHE Central Ohio Section members are encouraged to submit entries for their respective projects.

Projects submitted must be directly related to a field of transportation and must be located within the defined acceptable areas of the State of Ohio. The Project of the Year Award will be announced and presented at our ASHE Spring luncheon in May.

One winning project will be selected for each of the following categories:

- \$5 million and under construction cost category
- Over \$5 million construction cost category
- Peer's Choice category

Awards will be presented to the owner, designer, & contractor in each category.

The winning teams will receive:

- Awards to be presented to the Owner, Designer, and the Prime Contractor at the ASHE May Luncheon.
- Reimbursement of ASHE Spring Luncheon Costs for one representative each from the Owner, Designer, and the Prime Contractor (does not apply to Peer's Choice category).
- An article written by the winning team about the project will be placed in the ASHE Central Ohio Section quarterly newsletter. Also, a photo of the project will be included in the ASHE Central OH display booth.
- Free entry into the ASHE Regional POY Competition (does not apply to Peer's Choice category).
- The opportunity for the winning team to write and submit an article about the project for publication in the ASHE National Scanner Magazine (does not apply to Peer's Choice category).

All teams submitting a Project of the Year application that meet the entry requirements will be provided the opportunity to display an exhibit about their project on a 30" x 30" board at the ASHE Spring luncheon in May.

Entries must be received by an ASHE Central Ohio Section Board Member by **March 2, 2018**. Applicants may submit more than one entry. There is a \$100 fee per entry which will be credited to the ASHE Central Ohio Section Scholarship fund. If any member on the submitting team is an ASHE Highway Club Member, the fee for the first entry is waived.

Eligible project examples include highway, bridge, traffic signal, railroad, public transit, and bikeway projects.

Rating Criteria used for the judging will include: **Benefits to the Public Complexity**

Innovation and Unique Features Aesthetics & Sustainable Features



Over \$5 million
Sawmill Parkway Extension
Burgess & Niple, Inc.



Under \$5 million & Peer's Choice
US23/Pennsylvania Ave. Extension
ms consultants

For further information please visit our website: www.centralohashe.pro

for official entry forms or contact:

Mike Killian (Burgess & Niple, Inc.) @ 614-459-2050 or mike.killian@burgessniple.com



The Central Ohio Chapter of the American Society of Highway Engineers is pleased to announce the January Section Meeting featuring:

2018 Central Ohio Capital Improvements Program Luncheon

TUESDAY, JANUARY 30, 2018

Registration: 11:00 am
Lunch: 11:30 am
Program: 11:45 am

**VILLA MILANO BANQUET
AND CONFERENCE CENTER**

1630 Schrock Road
Columbus, OH 43229

JOIN US FOR OUR ANNUAL CAPITAL IMPROVEMENTS LUNCHEON

Representatives from the City of Columbus, Delaware and Franklin Counties, and ODOT District 6 will present their upcoming programs. This is always our most popular luncheon and we hope to see you there!

Speakers include:

James Young, City of Columbus Public Service
Rob Riley, Delaware County Engineer's Office
Cornell Robertson, Franklin County Engineer
Thom Slack and **Cindy Wengerter**, ODOT District 6

THE CITY OF
COLUMBUS

 OHIO DEPARTMENT OF
TRANSPORTATION



DELAWARE COUNTY ENGINEER

MENU

Lasagna, salad, bread, and dessert
Special dietary needs can be accommodated by request

TICKETS

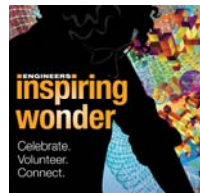
Students Free – Government Employees \$10 – ASHE Members \$25 – All Other Guests \$35
Prepayment is preferred online via [Eventbrite](#)

Eventbrite

Or by mailed check to:
Central Ohio ASHE
Attn: Justin Soltesz
c/o American Structurepoint
2550 Corporate Exchange Drive Suite 300
Columbus, OH 43231

RSVP

By **THURSDAY, JANUARY 25** at 4pm at [ASHE CIP Luncheon on Eventbrite](#)
or contact Justin Soltesz at 614.901.2235 or jsoltesz@structurepoint.com



Central Ohio Engineers Week Luncheon Thursday, February 22, 2018

Bridgewater Banquet & Conference Center
10561 Sawmill Parkway—Powell, Ohio 43065

Join us in "Inspiring Wonder" during 2018 Engineers Week
Network with colleagues and meet local high school & college students
interested in engineering

THE ROLE OF EMERGENCY MANAGEMENT IN DISASTERS

Keynote Speaker: Laura Adcock, Ohio Emergency Management Agency (Ohio EMA)

When natural disasters strike, engineers play a vital role in the response and recovery process. Engineering expertise in a variety of disciplines is needed to assess damage to infrastructure and restore water service, communication lines, power grids and the transportation network. Ms. Adcock will talk about how the engineering profession aids local governments following disasters.

Laura Adcock is the Disaster Recovery Branch Chief at the Ohio EMA, where she administers the FEMA Public Assistance Grant Program following Presidential disaster declarations and has implemented the Program for 26 Presidential disaster declarations in Ohio.

11:30 am — Registration
12:00 pm — Lunch
12:15 - 1:15pm — Program

Menu: Choice of Lemon-Rosemary Grilled Chicken, Roasted Red Potatoes, and Seasonal Vegetable Medley OR Vegetarian entrée.

Cost:

\$25.00 Early Bird - registration by February 10th

\$35.00 After February 10th

Students are Free - Contact Kristin Studabaker to register at
kstudabaker@cmtran.com

Reservations:

Meal selections and online payment can be made at:

[Engineers Week Luncheon Registration](#)

If paying by check, please mail checks to:

Jared Love

WSP

2 Miranova Place, Suite 450

Jared.Love@wsp.com

Checks Payable to **Ohio Section ITE**

Questions: Please contact Jared Love at Jared.Love@wsp.com or (614) 791-5176

2018

TECHNOLOGY ENGINEERING



EXPO

2018 ASCE CENTRAL OHIO STEM EXPO

SATURDAY, MARCH 3, 2018 9 AM—1 PM

**THOMAS WORTHINGTON HIGH SCHOOL
300 WEST DUBLIN GRANVILLE ROAD, WORTHINGTON, OHIO**

The American Society of Civil Engineers (ASCE) is hosting its 5th Annual Central Ohio STEM Expo, which is a free educational outreach event for students grades K through 8 that will feature fun, interactive activities and exhibits in the Science, Technology, Engineering and Math fields. Last year's event welcomed over 500 students and featured nearly 40 different activities presented by local professional organizations, universities and university student groups, consulting firms, non-profits, and STEM related companies. Student participants built race cars out of food items, battled robots, flew drones, modeled buildings, saw concrete float, and interacted with numerous other activities and exhibits.

Check us out on social media on Facebook (www.facebook.com/CentralOhioStemExpo) and Twitter (@CentralOhioSTEM).

Pre-Registration

Please visit the event webpage at http://centralohioasce.org/2018_STEM_Expo to RSVP for this event.

Pre-registration is encouraged but registration will also be available the day of the event.

Platinum Sponsors



Gold Sponsors



Silver Sponsors



Upcoming Events & Announcements

2018 CENTRAL OHIO CAPITAL IMPROVEMENTS PROGRAM LUNCHEON

- Tuesday, January 30, 2018
 - Villa Milano Banquet & Conference Center
1630 Schrock Road
Columbus, OH 43229
-

CENTRAL OHIO ENGINEERS WEEK LUNCHEON

- Thursday, February 22, 2018
 - 12:00 Registration, Crowne Plaza Columbus Downtown
 - Bridgewater Banquet & Conference Center
10561 Sawmill Parkway
Powell, Ohio 43065
 - Join us in "Inspiring Wonder" during 2018 Engineers Week. Network with colleagues and meet local high school & college students interested in engineering
-

2017 PROJECT OF THE YEAR

- Entries must be received by an ASHE Central Ohio Section Board Member by March 2, 2018
-

2018 ASCE CENTRAL OHIO STEM EXPO

- Saturday, March 3, 2018
 - 9:00 am - 1:00 pm at Thomas Worthington High School
-

ASHE SPRING TECHNICAL SEMINAR

- April 2018
- More Details to Come

Thanks to the Central Ohio Section of ASHE sponsors for their generous support



SMART
SERVICES, INC.

PARSONS

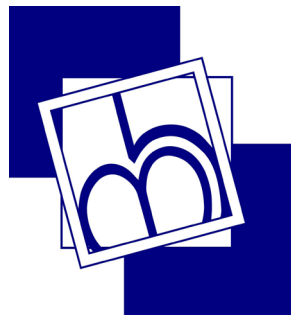
**McCORMICK
TAYLOR**

STRAND
ASSOCIATES®

GPD GROUP®
Glaus, Pyle, Schomer, Burns & DeHaven, Inc.

BURGESS & NIPLE
Engineers ■ Architects ■ Planners

ADS
ADVANCED DRAINAGE SYSTEMS, INC.



TranSystems
EXPERIENCE | Transportation

**AMERICAN
STRUCTUREPOINT**
INC.

**Cardno
TBE**
Shaping the Future

WOOLPERT
ARCHITECTURE | ENGINEERING | GEOSPATIAL

Gannett Fleming
Engineers and Architects, P.C.
Excellence Delivered *As Promised*

HNTB

Stantec

OHM
Advancing Communities



**RESOURCE
Rii
INTERNATIONAL**

**Flexible
Pavements**
of Ohio

**Jones
Stuckey**
A Division of **Pennoni**

CONTECH
ENGINEERED SOLUTIONS

CT Consultants
engineers | architects | planners

HTL
ENGINEERING INC.

ms
ms consultants, inc.
engineers architects planners

Terracon
Consulting Engineers & Scientists

EL ROBINSON
ENGINEERING

DLZ
ARCHITECTURE • ENGINEERING • PLANNING
SURVEYING • CONSTRUCTION SERVICES

**Mead
& Hunt**

IKOCPA
INDIANA • KENTUCKY • OHIO
CONCRETE PIPE
ASSOCIATION