

President's Message

ASHE Members, Colleagues, and Friends,

It is a pleasure and privilege to serve as the new Central Ohio Section President. While it has certainly not been a normal year thus far, I, and the rest of the board will be striving to provide you with opportunities and benefits throughout the year. As engineers our utmost duty is to the life safety, health, and welfare of the public, and we will continue to uphold that in our professional networking life by making use of webinars to provide interaction and professional development hours, offering smaller and socially distanced / masked gatherings for those who wish to partake, and supporting charitable and philanthropic efforts. We are committed to continuing our support for the scholarship program and have added a donation to the Future Cities Competition this year as well.

I would like to recognize and thank our Past President Sean Oatman, and the rest of the 2019-2020 board, who placed a focus on increasing the value to our members. This included expanding our professional development offerings to include more ethics sessions and partnerships with ODOT and the City of Columbus for updates and technical seminars. We have continued our scholarships as planned and last year expanded our membership events. As we continue to prepare for the 2022 ASHE National Conference in Columbus I would also like to recognize the executive committee: Emily Preston, Aaron Call, Mike Raubenolt, Ted Beidler, and Angela Fedak for their leadership in bringing this conference to Columbus and making it a reality. A thank you to all those who are currently serving in a committee chair or committee member role for the conference as well. As a volunteer organization, we are fortunate to have many individuals willing to dedicate their time and we are very grateful to the members and companies who have devoted their time, energy, and resources to make the ASHE Central Ohio Section successful. It is also never too late should you wish to become involved!

While we mainly think of health and welfare in physical terms there are many other determinants of health including social and community interactions. At its core, that is what ASHE and organizations like us are: a community of professionals dedicated to improving the world around us by maintaining and creating the infrastructure used by our larger neighborhoods, community, and society. It can be easy to lose sight of that goal in the daily grind of constant web meetings, disconnected work life, increased childcare challenges for many, and the general stressors of life in 2020. I encourage you to take a moment during your day to reflect on some simple facts: you are a part of a community with the shared goal of making the world just a little bit better; your actions and work product matters and makes a difference; there is never too small an act of kindness – even if as simple as checking in with a coworker or colleague to see if they need help before you log off; through your actions, tomorrow can be a better and brighter day than today.

My focus this year will be to try to find new and innovative ways to connect our members with each other and the organization to maintain and develop our professional community. This is likely to take several forms and feedback is both welcomed and appreciated. As always, please don't hesitate to reach out if you have any suggestions, ideas, or would like to help. You may have already noticed an increased number of polls being sent out to gauge interest levels and event types and that is likely to continue as we feel our way through the pandemic. "May you live in interesting times" comes to mind as apropos.

We hope to see and talk to you soon, be it online or (distanced & masked) in person. Until then, stay safe, and I wish you, your family, your friends, and our community the best.

Tom Less
Central Ohio ASHE President



2020 / 2021 Central Ohio ASHE Board of Directors

President

Tom Less
Woolpert



First Vice-President

Justin Soltesz
American Structurepoint



Second Vice-President

Mike Killian
Burgess & Niple



Secretary

Mike Taricska
Burgess & Niple



Treasurer

Mike Raubenolt
American Structurepoint



Past President

Sean Oatman
OHM Advisors



Directors

Programs

Cole Marburger
Gannett Fleming



Public Relations

Dan Schmuhl
Carpenter Marty



Technical

Chad Rundle
DLZ



Membership / Legislative Liason

Jordan Gort
Strand



Regional Representative

Aaron Call
OHM



Scholarship

Danny Soroka
Burgess & Niple



Golf Outing Coordinator

Paul Denny
Woolpert



2019 Project-of-the-Year Competition

Despite the craziness of a world-wide pandemic, our Central Ohio ASHE 2019 Project-of-the-Year Competition carried on as it does each year, seeking the best transportation related projects from the prior year. Award categories for projects less than \$5M construction cost, greater than \$5M construction cost, and Peers' Choice were up for grabs based on benefits to the public, complexity, innovation, unique features, aesthetics, and sustainability. ASHE members with no affiliation to the entries and representing various age groups and sectors of our industry, such as roadway engineers, bridge engineers, consultants, and government employees were selected as judges. To ensure anonymity, judges scores were collected by an separate independent board member who removed the judge's names and summarized the results. The four entries received were posted on our website in mid-June and the following winners were announced shortly thereafter:

Greater than \$5M Construction Cost Category Winning Entry:

Hard Shoulder Running Pilot Project (Smartlane)
(ODOT D6, B&N, and Complete General Construction)

Less than \$5million Construction Cost Category Winning Entry:

Olentangy Trail - Bethel Road Connector Project
(Columbus Rec. & Parks, B&N, and Complete General Construction)

Peers Choice Winning Entry:

Piatt Road Extension Project
Delaware County Engineer, Mannik & Smith, Strawser Paving Co.

Congratulations! Engraved trophies were distributed to recognize each winner. Proceeds from this event support our Central Ohio ASHE Scholarship Fund.



Hard Shoulder Running Pilot Project



Olentangy Trail - Bethel Rd. Connector



Piatt Road Extension Project

ASHE Mission Statement

Provide a forum for members and partners of the highway industry to promote a safe, efficient and sustainable highway system through education, innovation and fellowship.

Technical Session Webinars

Member education is a key component of our ASHE Mission Statement. In past years, this would occur through lunchtime technical presentations. However, as everyone is well aware, luncheons were largely banished from the 2020 vocabulary. As an alternative, our Central Ohio ASHE organization partnered up with several other local organizations to offer education through technical webinars. Recent examples include:



ASHE / ASCE Webinar - ODOT South Side Mega Fix

On August 20th, Steve Fellingner (ODOT D6) and Randy McClellan (JMT) gave a 1-hour virtual presentation on this \$120 million reconstruction and widening project along I-71 between I-70 and Stringtown Road south of downtown.

This project includes

- the reconfiguration of the I-71 south/I-270 interchange
- construction of a new ramp from I-71 south to Stringtown Road
- replacement of five bridges
- and the construction of two noise walls.

The project is expected to be completed later this year.



ASHE / ABCD Webinar - Cincinnati Regional Airport Design

On September 3rd, ASHE and ABCD joined forces to provide a free 1-hour technical webinar regarding the Woolpert designed Cincinnati Airport Terminal Drive Reconstruction that was recently built by Prus Construction. Tom Less (Woolpert) delivered the presentation to 44 attendees and covered the planning, design, and construction of this project. Topics discussed included:

- a 340-foot-long Mechanically Stabilized Earth embankment buildup
- 3 bridge designs (147-ft steel beam, 475-ft curved plate girder, and a 282-ft prestressed I-girder)
- project complexities (partial hammerhead pier, a series of single span piers, drilled shaft core sonic logging, anti-terrorism loading, site specific corrosion analysis, and tight site constraints)
- discipline coordination (lighting, drainage, aesthetics, and geotechnical)
- maintenance of traffic

ASHE National Conference 2022 Update

Earlier this past year, we announced the exciting news that Columbus, Ohio will host the upcoming 2022 ASHE National Conference. While it may seem like a far way off, a lot has been happening already. On February 27th, an open meeting, attended by over 60 interested volunteers was held at the ODOT District 6 office. At this meeting, Emily Preston (Compass) and Aaron Call (OHM) introduced the conference Executive Committee and Committee Chairs and presented on the various committee tasks necessary to host an ASHE conference. Since then, a generous army of committee volunteers has been established with each group working on tasks assigned by their committee chair. Additionally, committee leaders have been completing essential tasks such as establishing budgets, vetting out and negotiating contracts with potential hotels and exhibiting companies, and establishing potential floor plans.

In May, a conference theme and logo competition was established that generated many great ideas. On July 31st, it was announced that the great ideas of both Jim Breitingner and Joe Bolzenius were combined into one final theme, **Thinking SMARTer – The Next Generation of Travel**. At the same time, the conference committee was also proud to present the conference logo (right).

While COVID has kept everybody somewhat cooped up, it has been exciting looking forward to and planning for this fun conference. While each Committee Chair is already backed by 2-5 committee members, we are always happy to accept more volunteers. If you would like to join a committee, please feel free to contact Aaron Call (Aaron.Call@ohm-advisors.com) or Emily Preston (epreston@compassinf.com)



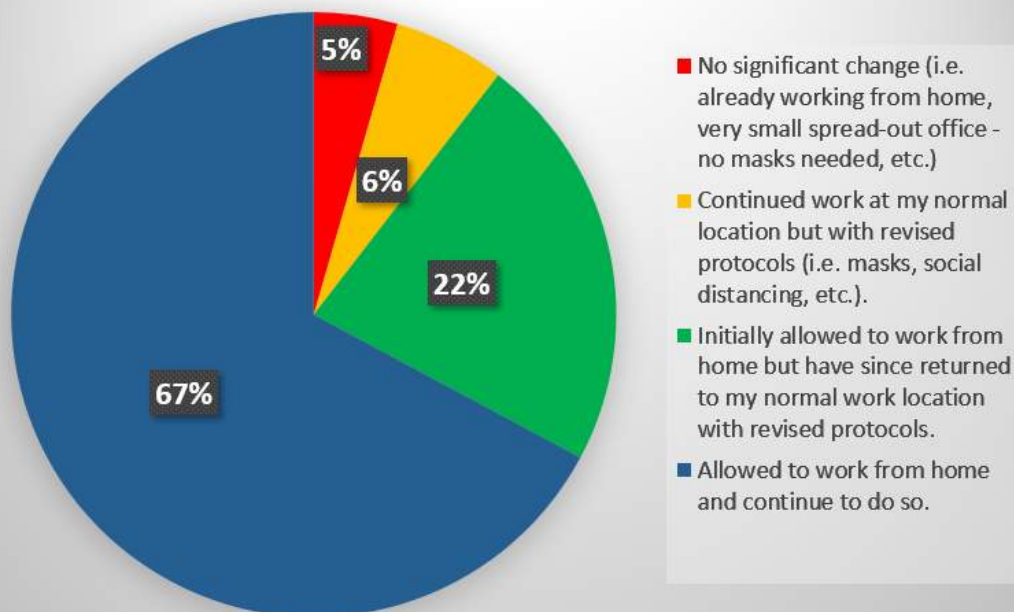
Executive Committee	Name
Co-Chair	Aaron Call
Co-Chair	Emily Preston
Treasurer	Mike Raubenolt
Member	Ted Beidler
Member	Angela Fedak
Committee	Committee Chair Name
Financial	Mike Raubenolt
Sponsorship	Joy Lanham
Technical	Dave Jones
Exhibit	Mike Killian
Program	Tom Less
Registration/Reception	Justin Soltész
Entertainment	Sean Oatman
PR/Publicity	Kristin Studabaker
Golf Outing	Patrick Herl
Transportation	Chris Shonk
	Jason Lutz
Guest Program	Cole Marburger
Facilities	Angela Fedak

Central Ohio ASHE COVID-19 Work Experience Survey

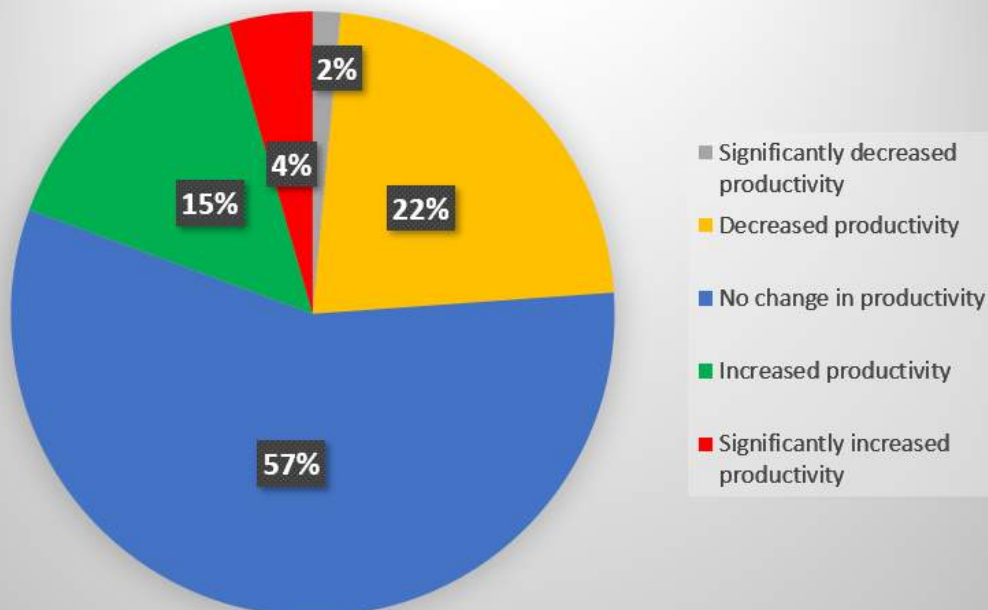
I recall sitting in a local mexican restaurant in early March, eating lunch with my co-workers and talking about the COVID-19 virus that was spreading throughout China. Like most people, not a single one of us at that table had any idea the world would be where it is on this October day. The way this virus has changed everything from the way we work and communicate, to the events that we can and cannot hold, to even the hours we work, is unbelievable. I know how Burgess & Niple and others that I correspond with are addressing the situation. But, I thought it would be interesting to gather a better representation on how COVID-19 was effecting the broader ASHE membership. So, in late August, I sent out a brief 10 question survey to better understand - How is COVID effecting your work experience? Below are the results from the 67 people that responded...

-Mike Killian

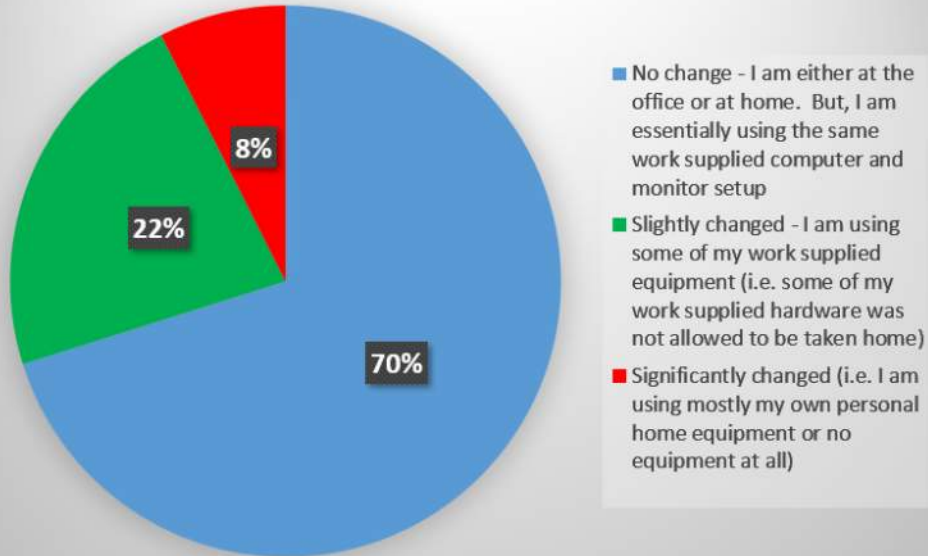
Q1: How did your place of employment respond to COVID?



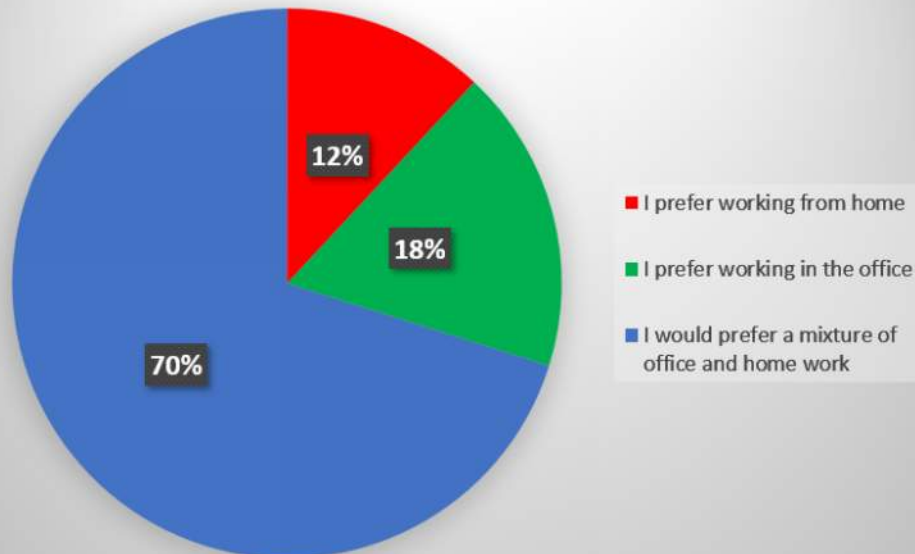
Q2: How has COVID affected your personal productivity?



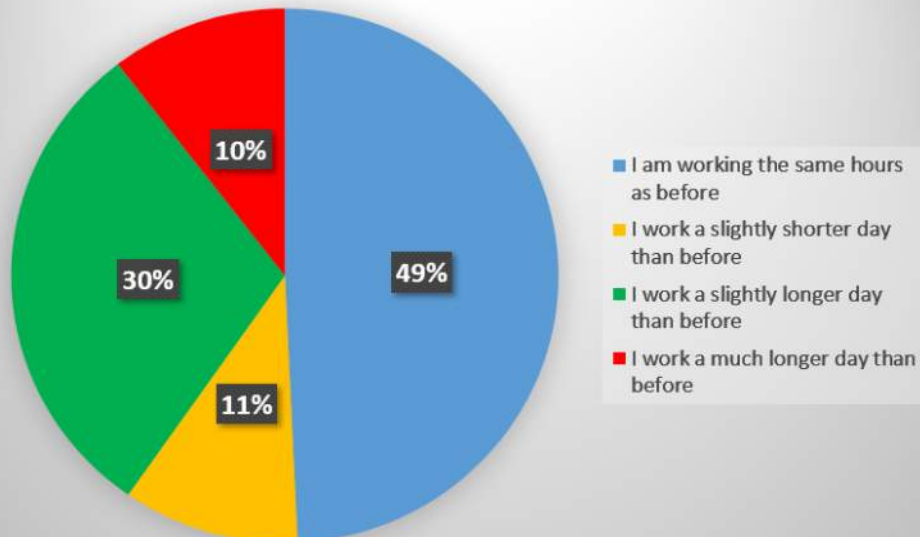
Q3: How has your workstation hardware changed due to COVID?



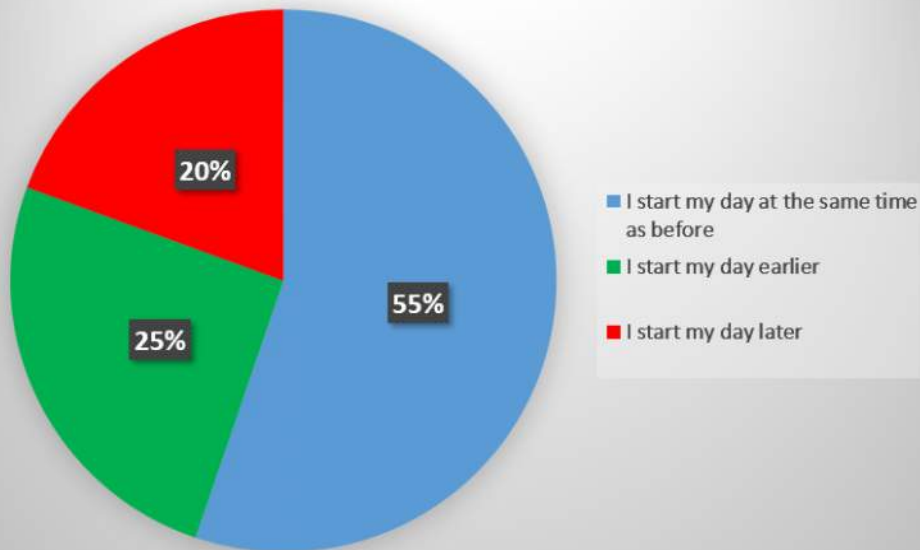
Q4: After COVID, how would you prefer to work?



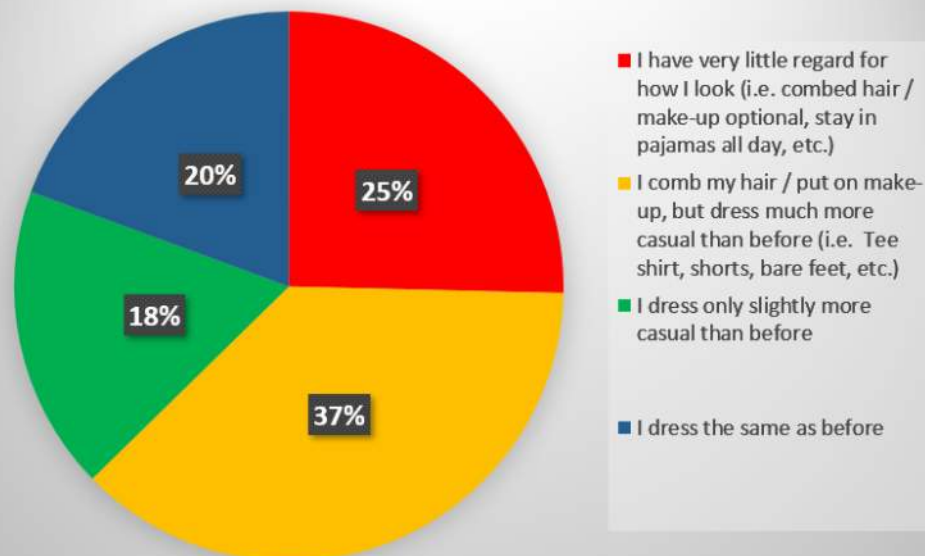
Q5: How have your work hours been effected by COVID?



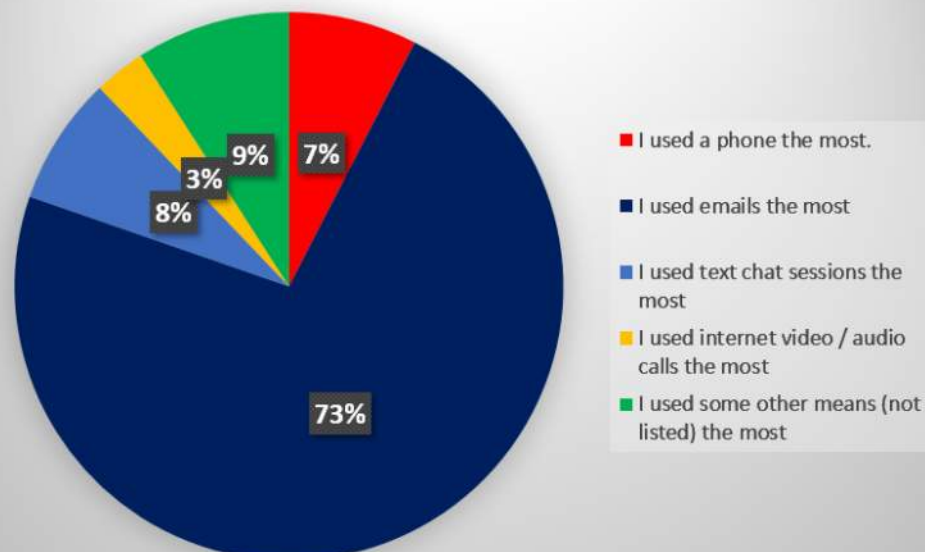
Q6: How has your start time been effected by COVID?



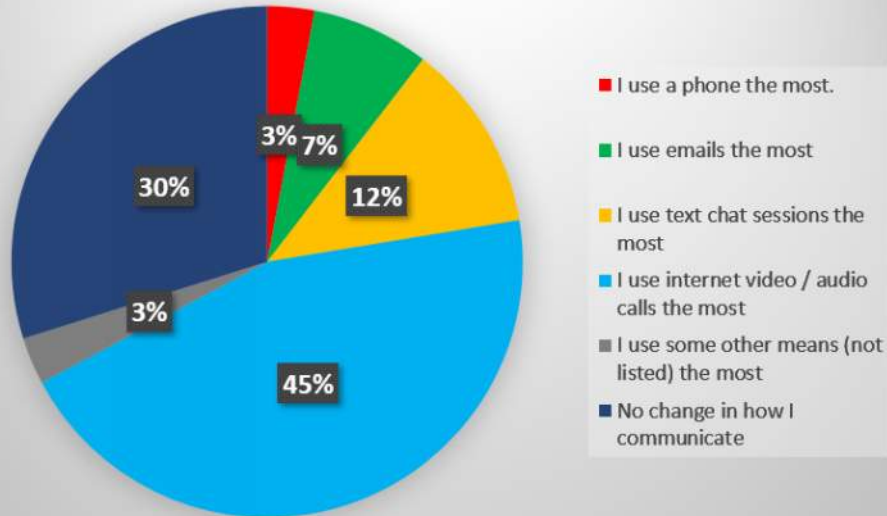
Q7: How has your level of attire been effected by COVID?



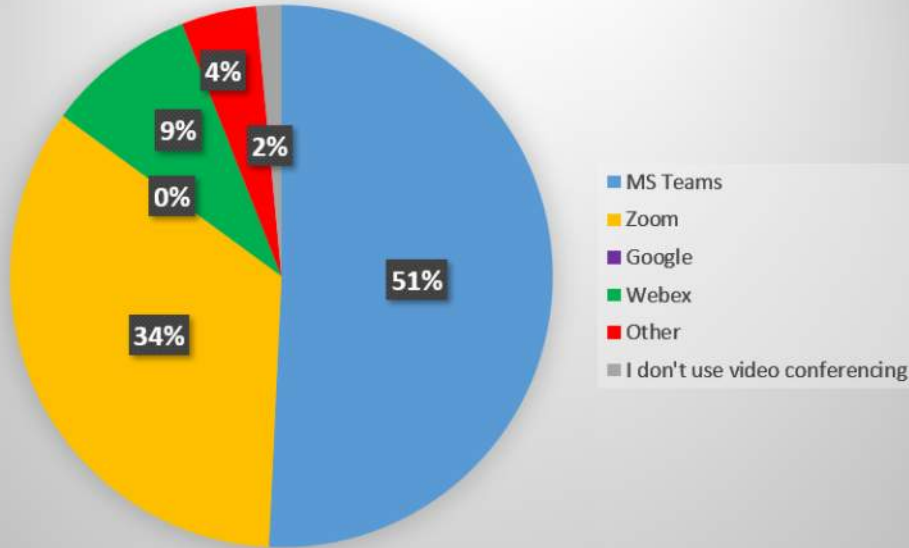
Q8: How did you mostly communicate PRIOR to COVID?



Q9: IF your means of communication has changed during COVID, how do you now mostly communicate?



Q10: What is your preferred video conferencing platform for work?



ASHE Sponsors Future Cities Competition

The ASHE Board made the decision to support this year's Future Cities Competition (FCC) with a \$1000 Silver level sponsorship. Future City is a powerful tool that strengthens students' 21st century skills, teaches them civics concepts, motivates them to study math & science, and introduces them to potential careers in the STEM fields.

Some highlights of the impact the FCC is having:

- 85% of students reported that Future City helped them see that math and science are important to their future.
- 83% reported they learned how to use engineering to solve real-world problems.
- 81% of educators saw increases in students' writing and research abilities.
- 92% of educators saw increases in students' problem-solving skills.
- 49% of Future City participants are girls
- One-third of participating schools nationally have 50% of their students enrolled in their free lunch program.

This year's competition date is Saturday, January 9, 2021. Their website is www.futurecity.org

If you are interested in volunteer opportunities in mentoring or judging, please contact

Mark Farrell at mark.farrell@clearresult.com or Joe Bolzenius at Joseph.Bolzenius@wsp.com.

2020 ASHE Scholarship Announcement

We are pleased to announce the recipients of the 2020 Central Ohio ASHE Scholarship. Congratulations to Erin Baumann, Jacob Rorabaugh, and Ian Smith on being this years recipients!

This scholarship is provided to junior or senior level undergraduate students majoring in Civil Engineering at OSU. The students must have a 3.0 minimum GPA and an expressed interest in the transportation industry of Central Ohio through coursework and engineering experience. This year, each student will receive a check for \$2,500. Thank you to all of our corporate sponsors and members who make this scholarship possible!!

Due to the uncertainty of the COVID-19 conditions, we are postponing the scholarship event until the spring when we hopefully can safely gather to recognize the recipients and sponsors, and provide a fun event for our members. More details will be coming on this over the next month. In the meantime, you can reserve spots at the event for your employees through a corporate sponsorship. Use the link below or contact Danny Soroka to reserve today and ensure we can support at least 3 students in 2021!

<https://www.eventbrite.com/e/5th-annual-ashe-scholarship-event-tbd-tickets-124099955307?utm-medium=discover&utm-campaign=social&utm-content=attendeeshare&aff=escb&utm-source=cp&utm-term=listing>

The scholarship planning committee is also currently looking for additional members. The committee is responsible for planning the annual scholarship event and raising scholarship funds. If you are interested in becoming more involved, this is a great opportunity! Contact Danny (Scholarship Director) at Daniel.soroka@burgessniple.com.



Erin Baumann



Jacob Rorabaugh



Ian Smith

Erin is a senior at The Ohio State University graduating May 2021. She currently works as a research assistant for Risk Assessment and Management of Structural and Infrastructure Systems laboratory. Erin is hoping to obtain an entry level position in structural or bridge engineering. At OSU, she is involved in leadership positions with American Society of Civil Engineers (ASCE), Society of Women Engineers (SWE), and Club Lacrosse. Erin was born in Columbus Ohio and graduated from Thomas Worthington High School. She is passionate about traveling and serves in engineering service projects with OSU Study Abroad and Engineers Without Borders.

Jacob is a senior studying Civil Engineering at Ohio State University and will be graduating in the Autumn of 2020. He is interested in finding a job doing transportation/highway design. He has interned with PSI Intertek in Hilliard and is currently working as a concrete finisher and freelance tree climber. He expressed that he is honored to receive one of the three Central Ohio ASHE Scholarships of 2020.

Ian is from Lancaster, Ohio, and is a senior at Ohio State University's College of Civil Engineering and plans to graduate after this upcoming Spring semester. He has had two internships, both of which were with ODOT District 5 where he learned a ton from all the people that he worked with and had a great time in the field. Ian was interested in becoming a civil engineer so he can work on large scale projects, that tons of people will see or use, and make something that will still be standing for many years to come. He thoroughly enjoys every aspect of the engineering process, from designing and estimating to the actual construction, but hopes to enter the profession as a project engineer. Ian believes they are the final line of defense for making sure that all the work that has gone into the design of the project does not go to waste. Outside of class and work, Ian enjoys running, playing tennis, and watching YouTube videos about news in the engineering world.

Top Golf Event Reminder!!

Don't forget, ASHE will be hosting a Topgolf Membership Appreciation Night **tomorrow night, Tuesday, Oct. 6, 2020, from 5:30 pm to 7:30 pm!**

Please join us for a fun night after a long social hiatus filled with golf, food and drinks.

This event is FREE to attend for current ASHE Members, but we ask that you still register online to reserve your spot: <https://www.eventbrite.com/e/ashe-topgolf-outing-tickets-122488924671>

If you haven't already registered, don't delay, space is limited.

Your dues must be current for 2020-2021 in order to attend the event.

Please note that masks are required!! For more information on the venue and current safety procedures, please visit their website: <https://topgolf.com/us/columbus/>

If you have any questions, please contact Jordan Gort (Membership Director) - Jordan.Gort@strand.com

Interested in becoming more involved in ASHE?

Our Central Ohio ASHE Chapter currently has availability in the following leadership positions.

- Regional Membership Chair -
if interested, please contact Aaron Call- Aaron.Call@ohm-advisors.com
- Scholarship Committee Member -
if interested, please contact Danny Soroka- Daniel.soroka@burgessniple.com

Thanks to ASHE Central Ohio Highway Club members
for their generous support

